



ÖZDEKAN RUBBER COMPANY BREIF PRESENTATION

Table of Contents

Presentation of the Özdekan rubber Co.....	3
a. Historical presentation	3
b. Headquarters.....	3
c. Organization chart	4
d. Global market	4
e. International technical competence (which standards around the world we follow).....	5
f. A general explanation of our production and control process	5
g. General presentation of our products and services we provide such as technical assistance, on site assistance, research and development and etc.	6
h. Presentation of the quality control and testing process.....	7
i. Projects they were involved with around the world.....	9
j. Our different certificates (constancy of performance certificate, quality management document, ISO certificates,).....	15

Presentation of the Özdekan rubber Co.

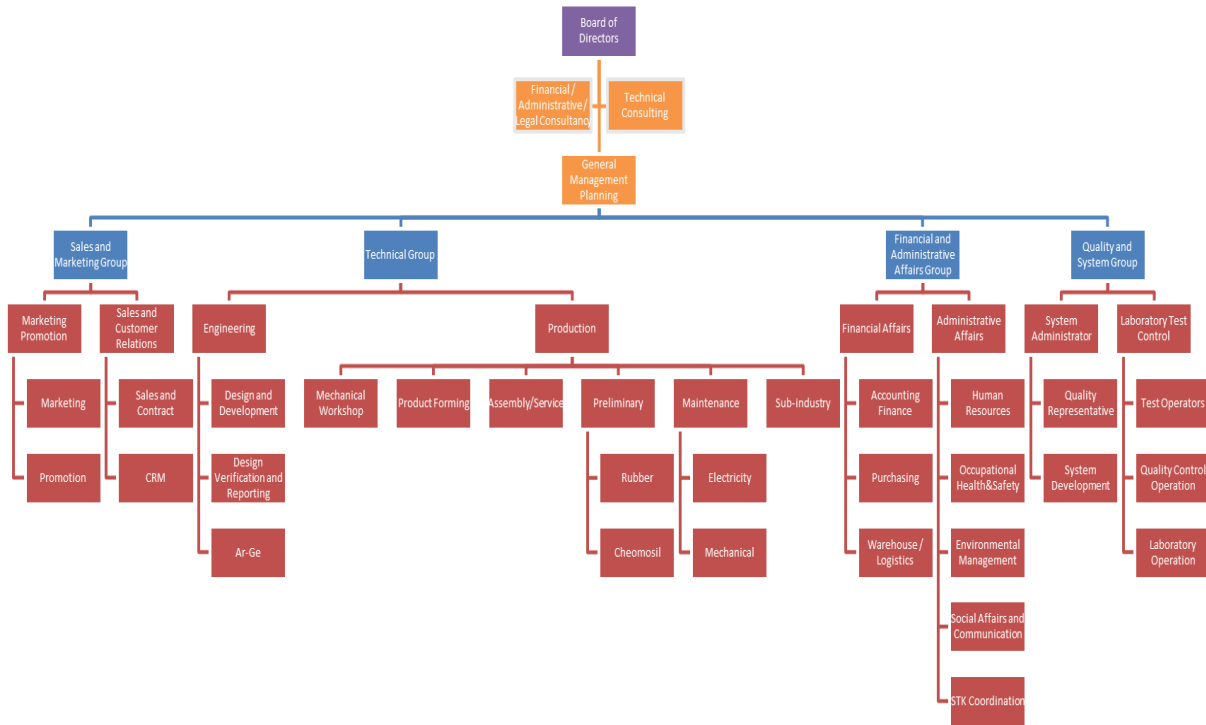
a. Historical presentation

ÖZDEKAN RUBBER is one of the leading manufactures in the rubber industries since 1982. Established in Ostim Organized Industrial Zone, Ankara, and continuing engineering and manufacturing activities within the years, it has become a well-known trade mark in the Turkey and worldwide. Özdekan rubbers headquarter and new production center is located in Sincan Organized Industrial Zone, Ankara. It covers more than 13000 m² area for production and testing, with its new testing center and quality control equipment. Our company manufactures more than 2000 tons of rubber products per year and our engineers and design teams support our customers in selection of bridge bearing, providing a service beyond that of manufacturing of elastomeric bearings. Our company is capable of manufacturing different sizes of elastomeric bearings varying from 150 mm to 1500 mm in diameter with different geometrical properties. Özdekan applies quality control tests at all phases of production process and performs required tests in conjunction with university laboratory according to different international standards. Özdekan holds CE for elastomeric bearings, ISO 9001, ISO 14001, ISO 18001, BS OHSAS 18001 and manufacturing capacity certificate from Turkish government and trade mark. On the following pages, we provide information about elastomeric bearings. Please contact us for further information, as we are always pleased to assist our customers and consulting engineers.

b. Headquarters

Özdekans new production line and testing center is located in Sincan Industrial zone. This new fabrication site consists of different laboratories for material testing and also testing equipment for establishing the performance parameters of elastomeric bearings and seismic isolaters. In our new site, different units handle the quality control process and traceability of products.

c. Organization chart



d. Global market

Özdekan has exported its products to more than 50 countries throughout the world. Our customers in recent years are from the listed countries:

1. Greece
2. Iraq
3. Azerbaijan
4. Georgia
5. Spain
6. Afghanistan
7. Egypt
8. Algeria
9. Turkmenistan
10. UAE
11. Senegal

e. International technical competence (which standards around the world we follow)

Özdekan's products are designed and tested according to the following standards;

- BS 5400
- TS-ISO-6446
- AASHTO-M251-74
- AS 5100-4
- EN 1337-3
- EN 1337-5
- DIN 4141
- EN 15129

Other standards could be followed if requested by customers.

f. A general explanation of our production and control process

Our production and control process are made up of the following units and steps;

1. Purchasing: At first step, all the material required for an ordinary order are listed and technical drawing of requested material are presented to purchasing unit. After controlling the required certificates and documents of supplier, material listed in this step are purchased.
2. Input control: In this step, material purchased are shipped to factory and initial controls and measurements are made by corresponding units.
3. Material testing laboratory: After initial control and measurements of input material, further control and tests on material is accomplished in our material testing laboratory or third-party laboratories.
4. Mechanical workshop: While processing the material supply of an order, our mechanical workshop starts to design and manufacture the required mold and other equipment for manufacturing
5. Product forming: In this step molds for forming the products are controlled and transferred to our manufacturing line.
6. Manufacturing: After calculating the required time and temperature for vulcanization, products are started to manufactured according to the time table of the order.
7. Final product controls: Measuring the dimension and other parameters of products are conducted in this step and if required any revision could be done.

8. Performance testing laboratory: After approval of the products by final product control team, products are subjected to quality and performance control tests and the results are reported.
 9. Package and shipment: Finally, all the approved products are packaged and delivered to customers.
- g. General presentation of our products and services we provide such as technical assistance, on site assistance, research and development and etc.

Özdekan Rubber Co. products are listed below;

- Elastomeric Plain Pads
- Elastomeric Bridge Bearings
- Multiflex Expansion Joint
- Lead Rubber Bearing (LRB)
- Ball Rubber Bearings (BRB)
- High Damping Rubber Bearing (HDRB)
- Vibration Lastics
- Neoprene Bands
- Earth Moving Machine Rubber Parts

We provide technical support for our customers from the start of the project until end of it. This technical support includes;

1. Design and optimization of bearing
2. Brief introduction about the design, test and installment of the products
3. Technical supervision in testing of bearing and interpretation of results
4. Technical supervision in installment process of bearing
5. Any required revision in every step of project

Our research and development team are consisting of Dr. Ali Karimzadeh (Ph.D. Civil Engineering) and Dr. Farzad Ahmadzadeh (Ph.D. Polymer Technologies). Our R & D team is active in both developing the new formulation for elastomer compounds and also optimizing the design geometry and other parameters of products. We have accomplished two projects supported by TÜBİTAK (scientific and technological research council of Turkey) supervised by Dr. F. Ahmadzadeh and also another project supported by “Ministry of Commerce of Turkey” supervised by Dr. A. Karimzadeh within the last four years. Also, we have published several papers prepared by our R & D team and published in international journals. Our R & D team participates in different seminars and conferences hold in Turkey and other countries.

h. Presentation of the quality control and testing process

As we hold CE for our products, we follow the requirements of EN 1337-3 for our quality control and testing process. According to this standard, physical tolerances on both material and bearings are followed by our quality control team. Also, we conduct routine tests on raw material according to table 8 of EN 1337-3. We follow the testing frequency of table 5 of EN 1337-3 for elastomeric bearing in every order. Our control system is based on system 1 of EN 1337-3 and we are subjected to in plant inspection of our factory by notified body every year. A brief introduction of our testing equipment is presented here.

1. Introduction

This part presents the specifications of Özdekan Test Laboratory. Tests are performed in accordance with requirements of EN 1337-3. Detailed features of the loading protocols are given in the referred standard. Data and graphical interpretations are presented in every test report.

2. Özdekan Elastomeric Bearing Test Laboratory

Results presented in every report are based on tests performed at elastomeric bearing test laboratory of Özdekan rubber company, Turkey. Özdekan test laboratory serves for testing of elastomeric bearings in accordance with the requirements of different codes. With the ability of testing different sizes of specimens, this laboratory can record almost the actual performance of test specimen under the scenario event.

Test setup of Özdekan test laboratory is capable of applying loading protocols defined by international code specifications. Thus, both routine tests and initial tests can be conducted by means of test setup of this laboratory. Figure 1 presents the view of test setup. Properties of the test setup are as follows:

- Vertical force = 4200 kN
- Horizontal force = 1000 kN
- Horizontal displacement = ± 500 mm
- Horizontal peak velocity = 100 mm/s
- Vertical peak velocity = 20 mm/s



Figure

1. Elastomeric bearing test setup of Özdekan Laboratory

Calibration of testing set up is conducted once a year and test results for every order are archived in our systems.

i. Projects they were involved with around the world

OUR COMPANY REFERANCES			
PROJECT NAME / COMPANY NAME	COUNTRY/CITY	DATE	PRODUCT NAME
RİYAD – ALREYN ROAD	SAUDI ARABIA	2010	ELASTOMERIC BEARING & EXPANSION JOINT
KAZAKİSTAN EXPO 2017 BUILDING	KAZAKHISTAN/ASTANA	2016	LEAD RUBBER BEARING
FORUM ALMATY AVM	KAZAKHISTAN/ALMATY	2016	HIGH DAMPING RUBBER BEARING
KRASNAYA POLYANNA AVM	RUSSIA/SOCHİ	2013	HIGH DAMPING RUBBER BEARING
KABİL POL-I SOHKTE BRIDGE	AFGHANISTAN	2010	ELASTOMERIC BEARING
EKVATOR GİNE BRIDGE	AFRICA	2012	ELASTOMERIC BEARING
ZAYE KEBELE YOLTEMİRİ	AZERBAIJAN	2013	ELASTOMERIC BEARING
İLE DÖVLET SERHADİ AVTOMOBİL YOLUNUN ELET	AZERBAIJAN	2013	ELASTOMERIC BEARING
YOL ÖTÜRÜCÜNÜN TEMİRİ	AZERBAIJAN	2013	ELASTOMERIC BEARING
ZAYE KEBELE YOL YAPIM İŞİ	AZERBAIJAN	2013	ELASTOMERIC BEARING
BAKÜ-RUSYA DEVLET OTOYOLU	AZERBAIJAN	2013	ELASTOMERIC BEARING
BAKÜ-RUSYA DEVLET OTOYOLU 164+449 KM YAPIM İŞİ	AZERBAIJAN	2013	ELASTOMERIC BEARING
M2 BAKI-ELET-QAZAX-GÜRDÜSRAN RESPUBLİKASI	AZERBAIJAN	2013	ELASTOMERIC BEARING
CONSTRUCTION OF LJULIN MOTORWAY SOFIA RING ROAD	BULGARIA	2012	ELASTOMERIC BEARING
TO DASKALOVO ROAD JUNCTION BRIDGE BEARINGS	BULGARIA	2012	ELASTOMERIC BEARING
REALISATION DE LA LIAISON AUTOROUTIERE RELIANT LE PORT DE DJEN DJEN A L'AUTOROUTE EST OUEST AU NIVEAU D'EL EULMA SUR	ALGERIA	2018	ELASTOMERIC BEARING
KHEMİS-MİLİANA OTOYOL	ALGERIA	2016	ELASTOMERIC BEARING
MOSTCONSULT LTD SOFIA BRIDGE	BULGARIA	2016	ELASTOMERIC BEARING
BRANCH OF SEZA CONSTRUCTION - MODERNİZATİON OF TBİLİSİ-RUSTAVİ SECTİON OF THE TBİLİSİ-RED BRİDGE (AZERBAIJANİ BORDER) ROAD	GEORGIA	2018	FIXED ELASTOMERIC BEARINGS
BORUN CONSTRUCTION LTD – TBİLİSİ 2 BRIDGE	GEORGIA	2017	ELASTOMERIC BEARINGS
CONSTRUCTION SERVICE LLC	GEORGIA	2018	BRIDGE EXPANSION JOINT
KERBELA STADIUM	IRAQ	2013	ELASTOMERIC BEARING
ERBİL 120 METERS FREEWAYS	IRAQ	2013	ELASTOMERIC BEARING
DUHOK ROAD AND BRIDGE DIRECTORATE STEEL BRIDGE	IRAQ	2013	ELASTOMERIC BEARING
GUND KOSE BRIDGE	IRAQ/DUHOK	2011	ELASTOMERIC BEARING
BEDAR BRIDGE	IRAQ/ZAKHO	2012	HIGH DAMPING RUBBER BEARING

KHANI BRIDGE	IRAQ/ZAKHO	2015	HIGH DAMPING RUBBER BEARING
AL SHALALAT BRIDGE	IRAQ/MOSUL	2018	ELASTOMERIC BEARING
BADIRKHAN BRIGGE (BEDIRHAN KÖPRÜSÜ)	IRAQ/ZAKHO	2012	ELASTOMERIC BEARING & EXPANSION JOINT
AL AKR COMPANY	IRAQ/MOSUL	2018	ELASTOMERIC BEARING & EXPANSION JOINT
TFAF COMPANY	IRAQ/ERBIL	2019	ELASTOMERIC BEARING & EXPANSION JOINT
RAFEEF ALKHYRAT COMPANY	IRAQ/MOSUL	2018	ELASTOMERIC BEARING & EXPANSION JOINT
SADA AL KAMAL CO.	IRAQ/BAGHDAD	2017	ELASTOMERIC BEARING & EXPANSION JOINT
TAI AINTHEED COMPANY	IRAQ/AL RAMADY	2018	ELASTOMERIC BEARING & EXPANSION JOINT
ALMADEED CONSTRUCTION COMPANY	IRAQ/AL RAMADY	2019	ELASTOMERIC BEARING & EXPANSION JOINT
TAREK AL ASTRAKAMA COMPANY	IRAQ/MOSUL	2018	ELASTOMERIC BEARING & EXPANSION JOINT
GUSON ALKROOM COMPANY	IRAQ/BAGHDAD	2019	ELASTOMERIC BEARING & EXPANSION JOINT
PEYMANŞAH COMPANY	IRAQ/ZAKHO	2017	ELASTOMERIC BEARING
AL ATEED COMPANY	IRAQ/BAGHDAD	2019	ELASTOMERIC BEARING & EXPANSION JOINT
SHAMS AL SABAH CO.	IRAQ/AL RAMADY	2019	ELASTOMERIC BEARING & EXPANSION JOINT
RAWAT AL TAAMER CONSTRUCTION CO LTD	IRAQ/MOSUL	2018	ELASTOMERIC BEARING & EXPANSION JOINT
BENEFICIARY COMPANY BRIDGE	ENGLAND	2012	ELASTOMERIC BEARING
GARFA-BENGHAZİ LIBYA KÖPRÜLERİ	LIBYA	2010	ELASTOMERIC BEARING
LAHORE BRIDGE	PAKISTAN	2011	ELASTOMERIC BEARING & EXPANSION JOINT
SHURABAD -SHAGON KISMI İNŞAATI	TAJIKISTAN	2014	ELASTOMERIC BEARING
KULYAB KALEİKHUMB YOLU YAPIM İŞİ	TAJIKISTAN	2014	ELASTOMERIC BEARING
TANZANYA CONSTRUCTION OF LUKULED	TANZANIA	2014	LEAD RUBBER BEARING
BABARAP BRIDGE	TURKMENISTAN	2012	ELASTOMERIC BEARING
NATA CONSTRUCTION TURKMENİSTAN AŞGABAT ŞANTİYESİ KÖPRÜSÜ	TURKMENISTAN	2013	ELASTOMERIC BEARING
NATA CONSTRUCTION TURKMENBAŞI FARAB BETWEEN 90 PIECES BRIDGE	TURKMENISTAN	2012	ELASTOMERIC BEARING
NATA CONSTRUCTION AŞGABAT MARY BETWEEN 90 PIECES BRIDGE	TURKMENISTAN	2013	ELASTOMERIC BEARING
NATA CONSTRUCTION ARÇMAN TÜRKMEN BETWEEN 31 PIECES BRIDGE	TURKMENISTAN	2013	ELASTOMERIC BEARING

NATA CONSTRUCTION AŞGABAT GARAGUM BETWEEN 9 BRIDGES	TURKMENISTAN	2012	ELASTOMERIC BEARING
TÜRKMENİSTAN OLİMPİYAT TOWN VELODROM PROJECT	TURKMENISTAN	2013	ELASTOMERIC BEARING
OTORIO CONSTRUCTION	UNITED KINGDOM	2013	ELASTOMERIC BEARING & EXPANSION JOINT
STREAMWAY DEVELOPMENT	UNITED KINGDOM/LONDON	2013	ELASTOMERIC BEARING & EXPANSION JOINT
AFET VE ACİL DURUM YÖNETİMİ BAŞKANLIĞI HİZMET BİNASI	TURKEY/ANKARA	2014	LEAD RUBBER BEARING
İSTANBUL 3. YENİ HAVALİMANI KÖPRÜ MESNETLERİ	TURKEY/İSTANBUL	2017	ELASTOMERIC BEARING
ESENYALI KÖPRÜSÜ	TÜRKİYE/İSTANBUL	2012	HIGH DAMPING RUBBER BEARING
DENİZLİ SANAYİ KAVŞAĞI KÖPRÜSÜ	TÜRKİYE/DENİZLİ	2017	LEAD RUBBER BEARING
OTOGAR KÖPRÜSÜ	TÜRKİYE/KIRIKKALE	2017	HIGH DAMPING RUBBER BEARING
MENEMEN-KOYUNDERE VİYADÜĞÜ	TÜRKİYE/İZMİR	2016	SLIDING BEARING
SAMSUN-KALIN DEMİRYOLU PROJESİ	TÜRKİYE/SAMSUN	2017	FIXED BEARING AND EXPANSION JOINT
DİYARBAKIR HAVALİMANI KÖPRÜ MESNETLERİ	DİYARBAKIR	2014	ELASTOMERIC BEARING
ŞEHİTKAMİL O.S.B. KÖPRÜSÜ	TÜRKİYE/G.ANTEP	2015	FIXED BEARING
DİYARBAKIR FAKÜLTE KÖPRÜ KAVŞAĞI İŞİ	DİYARBAKIR	2012	ELASTOMERIC BEARING
ÖZDEMİR KÖPRÜSÜ	DİYARBAKIR	2013	ELASTOMERIC BEARING
KIRCASALIH TCDD ÜST GEÇİT	EDİRNE	2009	ELASTOMERIC BEARING
ERZİNCAN KÖPRÜLERİ	ERZİNCAN	2010	ELASTOMERIC BEARING
TUZLA KÖY SERGE HES PROJESİ	ERZURUM	2013	ELASTOMERIC BEARING
KARAYOLLARI 13. BÖLGE KARGALIK KÖPRÜSÜ	ERZURUM	2012	ELASTOMERIC BEARING
İSPİR KÖPRÜSÜ	ERZURUM	2012	ELASTOMERIC BEARING
ERZURUM TOPRAK İŞLERİ -SANAT YAPILARI KÖPRÜLERİ	ERZURUM	2011	ELASTOMERIC BEARING
TEKMAN İL YOLU TEKMAN 1 KÖPRÜSÜ	ERZURUM	2012	ELASTOMERIC BEARING
BEYHAN İBARAJI VE HES ŞANTİYESİ PALU	ELAZIĞ	2012	ELASTOMERIC BEARING
ALAÇAM ESKİŞEHİR	ESKİŞEHİR	2012	ELASTOMERIC BEARING
ZERRİN VE YEŞİL ÇAY KÖPRÜ PRO YAPIM İŞLERİ	HAKKARİ	2012	ELASTOMERIC BEARING
AKSU KÖPRÜSÜ/MANSAP ULAŞIM KÖPRÜSÜ	ISPARTA	2011	ELASTOMERIC BEARING
GKBL 2 CEBRİBORU HATTI 3-4 ARASI KÖPRÜ İŞİ	ISPARTA	2013	ELASTOMERIC BEARING
ESENYALI E-5 KÖPRÜLÜ KAVŞAĞI YAPIM İŞİ	İSTANBUL	2013	ELASTOMERIC BEARING
BAHÇEŞEHİR VİYADÜĞÜ	İSTANBUL	2012	ELASTOMERIC BEARING
HAVAALANI KAVŞAK KÖPRÜSÜ	İSTANBUL	2009	ELASTOMERIC BEARING
HARAMİDERE ISLAHI	İSTANBUL	2012	ELASTOMERIC BEARING
SİLVİRİ-BOLLUCA	İSTANBUL	2012	ELASTOMERIC BEARING

ÇATALCA KÖPRÜSÜ	İSTANBUL	2011	ELASTOMERIC BEARING
AKBEZ VE TİYEK ÇAYLARI KÖPRÜLERİ	İSKENDERUN	2011	ELASTOMERIC BEARING
KEMALPAŞA BAĞLANTI YOLU KEMAL PAŞA TURGUTLU KAVŞAĞI	İZMİR	2015	ELASTOMERIC BEARING
KEMALPAŞA BAĞLANTI YOLU ARMUTLU KAVŞAĞI KÖPRÜSÜ	İZMİR	2015	ELASTOMERIC BEARING
KEMALPAŞA KAVŞAK KÖPRÜSÜ1	İZMİR	2015	ELASTOMERIC BEARING
KEMALPAŞA KAVŞAK KÖPRÜSÜ2	İZMİR	2015	ELASTOMERIC BEARING
ULUCAK KAVŞAĞI KÖPRÜSÜ 1	İZMİR	2015	ELASTOMERIC BEARING
KUYUCAK KAVŞAĞI 1	İZMİR	2015	ELASTOMERIC BEARING
ULUCAK ALTGEÇİT 2	İZMİR	2015	ELASTOMERIC BEARING
KARASULUK KAVŞAĞI	İZMİR	2015	ELASTOMERIC BEARING
DEPOLAR ALT GEÇİT KÖPRÜSÜ	İZMİR	2015	ELASTOMERIC BEARING
AKALAN KAVŞAĞI ALTGEÇİT KÖPRÜSÜ-2	İZMİR	2015	ELASTOMERIC BEARING
AKALAN KAVŞAĞI ALTGEÇİT KÖPRÜSÜ-1	İZMİR	2015	ELASTOMERIC BEARING
ANKARA-İZMİR DDDY ALTGEÇİT KÖPRÜSÜ	İZMİR	2015	ELASTOMERIC BEARING
KURUTMA KANALI VE YOL GEÇİŞ KÖPRÜSÜ	İZMİR	2015	ELASTOMERIC BEARING
TURGUTLU- MANİSA D.Y OTOYOL ALTGEÇİT KÖPRÜSÜ	İZMİR	2015	ELASTOMERIC BEARING
TURGUTLU- MANİSA D.Y OTOYOL ÜSTGEÇİT KÖPRÜSÜ	İZMİR	2015	ELASTOMERIC BEARING
TURGUTLU MANİSA KAVŞAĞI KOLU 4	İZMİR	2015	ELASTOMERIC BEARING
TURGUTLU KAVŞAĞI D.Y KANAL ALTGEÇİT KÖPRÜSÜ	İZMİR	2015	ELASTOMERIC BEARING
TURGUTLU KAVŞAĞI BAĞLANTI YOLU ÜSTGEÇİT	İZMİR	2015	ELASTOMERIC BEARING
SANCAKLI BOZKÖY ÜSTGEÇİT KÖPRÜSÜ	İZMİR	2015	ELASTOMERIC BEARING
SANCAKLI-İĞDECİK ÜSTGEÇİT KÖPRÜSÜ	İZMİR	2015	ELASTOMERIC BEARING
ÇAMBEL KÖYÜ ÜSTGEÇİT KÖPRÜSÜ	İZMİR	2015	ELASTOMERIC BEARING
KEMALPAŞA BAĞLANTI YOLU SÜTÇÜLER KAVŞAĞI KÖPRÜSÜ	İZMİR	2015	ELASTOMERIC BEARING
ULUCAK KAVŞAĞI KÖPRÜSÜ 6	İZMİR	2015	ELASTOMERIC BEARING
ULUCAK BEL.KÖP.1	İZMİR	2015	ELASTOMERIC BEARING
ULUCAK BEL.KÖP.2	İZMİR	2015	ELASTOMERIC BEARING
ANSIZCA KÖPRÜSÜ 3	İZMİR	2015	ELASTOMERIC BEARING
ULUCAK BEL.KÖP.3	İZMİR	2015	ELASTOMERIC BEARING
ULUCAK BEL.KÖP.4	İZMİR	2015	ELASTOMERIC BEARING
ANSIZCA KÖPRÜSÜ 1	İZMİR	2015	ELASTOMERIC BEARING
SÜTÇÜLER ALTGEÇİT KÖPRÜSÜ-2	İZMİR	2015	ELASTOMERIC BEARING

KEMALPAŞA BAĞLANTI YOLU NİF ÇAYI KÖPRÜSÜ	İZMİR	2015	ELASTOMERIC BEARING
KEMAL PAŞA DERESİ KÖPRÜSÜ	İZMİR	2015	ELASTOMERIC BEARING
TURGUTLU VİYADÜĞÜ	İZMİR	2015	ELASTOMERIC BEARING
NİF ÇAYI KÖPRÜSÜ	İZMİR	2015	ELASTOMERIC BEARING
BORNOVA VİYADÜĞÜ	İZMİR	2015	ELASTOMERIC BEARING
KURUTMA KANALI VE YOL GEÇİŞ KÖPRÜSÜ	İZMİR	2015	ELASTOMERIC BEARING
ULUKENT GEÇİDİ	İZMİR	2012	ELASTOMERIC BEARING
EVKA 5 KAVŞAK İNŞ DEMİRYOLU KÖPRÜSÜ	İZMİR	2012	ELASTOMERIC BEARING
MENEMEN-MANİSA OTOYOL YAPIM İŞİ	İZMİR	2015	ELASTOMERIC BEARING
İZMİR METROSU	İZMİR	2012	ELASTOMERIC BEARING
DOĞU KAVŞAĞI TABAKHANE 1, TABAKHANE KÖPRÜSÜ	İZMİR	2010	ELASTOMERIC BEARING
DOĞU KAVŞAĞI TABAKHANE 2 C KOLU KÖPRÜSÜ	İZMİR	2010	ELASTOMERIC BEARING
DOĞU KAVŞAĞI TABAKHANE 3 E KOLU	İZMİR	2010	ELASTOMERIC BEARING
OVAKÖY GRUBU OVAKÖY ÇAYLIOĞLU KÖPRÜSÜ	KASTAMONU	2010	ELASTOMERIC BEARING
KURUÇAY GRUP 2 KISIM KÖPRÜLERİ	KASTAMONU	2011	ELASTOMERIC BEARING
ORTALICA VE KAZANCIKÖY KÖPRÜLERİ	KASTAMONU	2011	ELASTOMERIC BEARING
KAYIKÖYÜ CUMHURİYET KÖPRÜSÜ	KASTAMONU	2012	ELASTOMERIC BEARING
SUNTA KÖPRÜLÜ KAVŞAĞI	KASTAMONU	2013	ELASTOMERIC BEARING
KORNOPA, KIVRIMÇAY, ARAKLAR KÖPRÜLERİ	KASTAMONU	2013	ELASTOMERIC BEARING
NARLI GAZİANTEP DEVLET YOLU	KAHRAMANMARAŞ	2013	ELASTOMERIC BEARING
ŞEYTANDERE KÖPRÜSÜ	KIRKLARELİ	2013	ELASTOMERIC BEARING
GÖLCÜK 2 KÖPRÜSÜ	KOCAELİ	2012	ELASTOMERIC BEARING
KOCAELİ B.B. GÖLCÜK 2 KAVŞAĞI ÜST GEÇİT KÖPRÜ MESNETLERİ	KOCAELİ	2012	ELASTOMERIC BEARING
ÜST GEÇİT A KÖPRÜSÜ	KOCAELİ	2012	ELASTOMERIC BEARING
ÜST GEÇİT B KÖPRÜSÜ	KOCAELİ	2012	ELASTOMERIC BEARING
GOODYEAR KÖPRÜLÜ KAVŞAĞI	KOCAELİ	2012	ELASTOMERIC BEARING
BAHÇECİK DAL-ÇIK İŞİ KÖPRÜ MESNETLERİ	ANKARA	2011	ELASTOMERIC BEARING
KOCAELİ HAYVANAT BAHÇESİ	KOCAELİ	2012	ELASTOMERIC BEARING
ÇAY KÖPRÜSÜ	ANKARA	2013	ELASTOMERIC BEARING
KONYA HIZLI TREN GARI PROJESİ	KONYA	2011	ELASTOMERIC BEARING
BEYŞEHİR ALTINAPA BARAJ SAVAĞI KÖPRÜSÜ	KONYA	2012	ELASTOMERIC BEARING
KONYA AKŞEHİR KÖPRÜLERİ	KONYA	2012	ELASTOMERIC BEARING

GEDİZ SİMAV BALIKESİR DEVLET YOLU	KÜTAYHA	2013	ELASTOMERIC BEARING
SİMAV DEMİRCİ AYRIMI KUZULUK KÖPRÜSÜ	KÜTAHYA	2013	ELASTOMERIC BEARING
KÜTAHYA BELEDİYESİ TOKİ YOLU KAVŞAĞI	KÜTAHYA	2013	ELASTOMERIC BEARING
KÜTAHYA ŞEHİR GEÇİŞİ SPORKENT KÖPRÜLÜ KAVŞAĞI	KÜTAHYA	2013	ELASTOMERIC BEARING
DDY ÜST GEÇİT DEĞİRMENÇAY KÖPRÜSÜ	MERSİN	2012	ELASTOMERIC BEARING
DENİZ HAVA KUVVETLERİ /DALAMAN	MUĞLA	2010	ELASTOMERIC BEARING
ESENÇAY KÖPRÜSÜ-UĞURLU KÖPRÜSÜ	MUĞLA	2011	ELASTOMERIC BEARING
ALPASLAN 2 BARAJI VE HES 1 KADEME İNŞAATI	MUŞ	2012	ELASTOMERIC BEARING
ÜNYE ÇEVRE YOLU KÖPRÜ ELASTOMERLERİ	ORDU	2010	ELASTOMERIC BEARING
BATIKAVŞAĞI KÖPRÜSÜ SAHİL KÖY ÜST GEÇİT KÖPRÜSÜ	ORDU	2010	ELASTOMERIC BEARING
TEK KIRAZ KAVŞAĞI KÖPRÜSÜ	ORDU	2010	ELASTOMERIC BEARING
ULUBEY AĞKOLU HES KRET KÖPRÜSÜ	ORDU	2012	ELASTOMERIC BEARING
ARDEŞEN FIRTINA DERESİ	RİZE	2013	ELASTOMERIC BEARING
ARDEŞEN RİZE YOLU	RİZE	2006	ELASTOMERIC BEARING
ARDEŞEN YOLU KÖPRÜLERİ	RİZE	2007	ELASTOMERIC BEARING
AKYAZI VİYADÜK KÖPRÜLERİ	SAKARYA	2012	ELASTOMERIC BEARING
AKYAZI OTOYOL KÖPRÜLERİ	SAKARYA	2012	ELASTOMERIC BEARING
SÖĞÜTLÜ VİYADÜĞÜ, HAL KÖPRÜSÜ, DARGEÇİŞ KÖPRÜSÜ	SAKARYA	2013	ELASTOMERIC BEARING
HENDEK VE ÇATALCA KÖPRÜLERİ	SAKARYA	2011	ELASTOMERIC BEARING
MADEN DERESİ KÖPRÜSÜ	SAKARYA	2012	ELASTOMERIC BEARING
KUMKÖY REGÜLATÖRÜ VE ÇARŞAMBA OVASI	SAMSUN	2012	ELASTOMERIC BEARING
SAĞ SAHİL SULAMASI 1. KISIM İNŞAAT İŞİ	SAMSUN	2012	ELASTOMERIC BEARING
BAFRA YOLU KÖPRÜ YAPIM İŞİ	SAMSUN	2012	ELASTOMERIC BEARING
TÜRKÖZÜ KÖPRÜSÜ	SİNOP	2010	ELASTOMERIC BEARING
YILDIZLI -ZARA KÖPRÜLERİ	SİVAS	2013	ELASTOMERIC BEARING
ULAŞ YOLU 2. KISIM PROJE İŞİ	SİVAS	2013	ELASTOMERIC BEARING
ZARA, GEMİBELİ SU ŞEHİRİ KÖPRÜLERİ	SİVAS	2010	ELASTOMERIC BEARING
TEKKE 2 KÖPRÜSÜ	SİVAS	2010	ELASTOMERIC BEARING
YILDIZELİ DERESİ KÖPRÜSÜ	SİVAS	2011	ELASTOMERIC BEARING
UÇAKSAVAR KAVŞAĞI	ŞANLIURFA	2013	ELASTOMERIC BEARING
SURUÇ ANAKANAL YAPIM ŞANTİYESİ DSİ KANAL GÜZERGAHI KÖPRÜLERİ	ŞANLIURFA	2012	ELASTOMERIC BEARING
SURUÇ OVASI SAĞSAHİL ANAKANAL KÖPRÜ YAPIM İŞİ	ŞANLIURFA	2012	ELASTOMERIC BEARING

VİRANŞEHİR YOLU KÖPRÜ MESNETLERİ	ŞANLIURFA	2011	ELASTOMERIC BEARING
DSİ 15. BÖLGE YUKARI HARRAN OVASI KM 17+915.00 KÖPRÜSÜ	ŞANLIURFA	2012	ELASTOMERIC BEARING
KÜÇÜKBOĞAZ KÖPRÜSÜ	ŞANLIURFA	2012	ELASTOMERIC BEARING
DEĞİRMENDERE 5. KÖPRÜ	TRABZON	2010	ELASTOMERIC BEARING
DEĞİRMENDERE 6. KÖPRÜ	TRABZON	2010	ELASTOMERIC BEARING
TRABZON YOLU İNŞAATI KÖPRÜ MESNETLERİ	TRABZON	2007	ELASTOMERIC BEARING
TRABZON LİMAN KÖPRÜSÜ	TRABZON	2005	ELASTOMERIC BEARING
MAÇKA-GÜMÜŞHANE-GİRESUN YOLLARI KÖPRÜ MESNETLERİ	TRABZON	2011	ELASTOMERIC BEARING
REŞADİYE YOLU KÖPRÜ MESNETLERİ	TOKAT	2009	ELASTOMERIC BEARING
ÖZALP DEVLET YOLU VE IRGAT KÖPRÜSÜ YAPIM İŞİ	VAN	2013	ELASTOMERIC BEARING

- j. Our different certificates (constancy of performance certificate, quality management document, ISO certificates,)

We hold quality management certificates of ISO 9001, ISO 14001, ISO 45001, BS OHSAS 18001 and manufacturing capacity certificate from Turkish government. We hold CE certificate for our elastomeric bearings.

CERTIFICATE



**Uluslararası
Belgelendirme**

**ÖZDEKAN KAUÇUK İNŞAAT YAPI PROJE
MÜH. MÜŞ. MÜMES. İTH. İHR. SAN. VE TİC. A.Ş.**

**AHI EVRAN OSB MAH. BÜYÜK TİMUR CAD. NO: 11
SİNCAN / ANKARA**



“Müşteri Memnuniyeti ve Şikâyetleri Yönetim Sistemi”

“Customer Satisfaction and Complaints Management System”

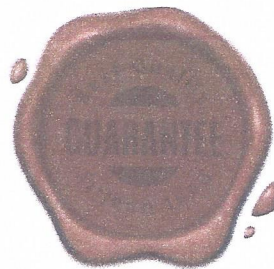
(ISO 10002:2018)

Kurduğunu ve uyguladığını belgelemekte ve BEL tarafından gerçekleştirilen denetim bu yönetim sisteminin aşağıdaki standardın şartlarını karşıladığını doğrulamaktadır.

It certifies that it is established and implemented, and the audit performed by BEL it confirms that this management system meets the requirements of the following standard.

Sertifika Numarası / Certificate Number	: A1526745
Sertifika Kodu / Certificate Code	: ÖZDEKAN KAUÇUK
Sertifika Yayın Tarihi / Certificate Issue Date	: 24.05.2022
Sertifika Geçerlilik Tarihi / Certificate Validity Date	: 24.05.2023
Sertifika Periyodu / Certificate Period	: 1 Yıl / 1 Year

Sistem etkin bir şekilde sürdürüldüğü ve gözetim tetkikleri zamanında yapıldığı müddetçe bu belge 1 yıl geçerlidir. BEL denetim yürütülmesinde gerekli itina ve yetkinlik göstermesine rağmen büyük ihtimallerde dahil sorumluluk kabul etmeyecektir. Bu belgenin mülkiyet hakkı BEL aittir ve istenildiğinde iade edilmelidir.



BELCERT ULUSLARARASI BELGELENDİRME ŞİRKETİ

Hürriyet Bulvarı, No:45, Türkseven Apt. K:1-D:7, Yakuplu, Beylikdüzü / İstanbul
Telefon: 0212 438 04 76 - E-mail: info@belcert.com

Belgenin geçerlilik durumu <https://www.belcert.com> adresinden kontrol edilebilir.

CERTIFICATE



Uluslararası
Belgelendirme

ÖZDEKAN KAUÇUK İNŞAAT YAPI PROJE
MÜH. MÜŞ. MÜMES. İTH. İHR. SAN. VE TİC. A.Ş.

AHI EVRAN OSB MAH. BÜYÜK TİMUR CAD. NO: 11
SİNCAN / ANKARA



Kuruluşunun “KAUÇUK VE METAL ÜRÜN İMALATI (ELASTOMER NEOPRENE MESNET, KAYAR, TEFLONLU, POT, SARKAÇ, TAKVIYESİZ VE ÇANAK MESNET, KÖPRÜ GENLEŞME DERZLERİ, ELASTOMER BANT, SİSMİK İZOLATÖR (DEPREM TİTREŞİM SÖNÜMLEYİCİ), MERMİ SÖNÜMLEME TAKOZU VE ÇELİK MERMİ TUZAĞI, POLİGON PERDESİ VE POLİGON EKİPMANLARI, POLİGON ATICI BANKOSU KONVEYÖR BANT RULO, KAUÇUK TAKOZ, OTOMOTİV VE İŞ MAKİNELERİ YEDEK PARÇALARI, HAYVAN YATAKLARI, HIZ KASISLARI)” **Kapsamı için**

For scope “RUBBER&STEEL PRODUCT MANUFACTURING (ELASTOMERIC NEOPRENE BEARING, FIXED, GUIDED, PTFE TEFLON BRIDGE BEARING, LRB, LDRB, HDRB, EXPANSION JOINTS, NEOPRENE PAD, SHEET, SEISMIC ISOLATOR, BALLISTIC RUBBER BLOCK, SHOOTING RANGE, POLYGON, BULLETPROOF CURTAIN, CONVEYOR BELT RUBBER SPACE PARTS, EARTH MOVING MACHINES RUBBER SPACE PARTS, SPEED BUMPS, ANIMAL MATS, COW PADS)”

İş Sağlığı ve Güvenliği Yönetim Sistemi

Occupational Health and Safety Management System

Kurduğunu ve uyguladığını belgelemekte ve BEL tarafından gerçekleştirilen denetim bu yönetim sisteminin aşağıdaki standardın şartlarını karşıladığını doğrulamaktadır.

It certifies that it is established and implemented, and the audit performed by BEL it confirms that this management system meets the requirements of the following standard.

ISO 45001: 2018

Sertifika Numarası / Certificate Number	: A1526744
Sertifika Kodu / Certificate Code	: ÖZDEKAN KAUÇUK
Sertifika Yayın Tarihi / Certificate Issue Date	: 10.05.2022
Sertifika Geçerlilik Tarihi / Certificate Validity Date	: 10.05.2023
Sertifika Periyodu / Certificate Period	: 1 Yıl / 1 Year

Sistem etkin bir şekilde sürdürüldükçe ve gözetim tetkikleri zamanında yapıldığı müddetçe bu belge 1 yıl geçerlidir. BEL denetim yürütülmesinde gerekli itina ve yetkinlik göstermesine rağmen büyük ihtimallerde dahil sorumluluk kabul etmeyecektir. Bu belgenin mülkiyet hakkı BEL aittir ve istenildiğinde iade edilmelidir.



BELCERT ULUSLARARASI BELGELENDİRME ŞİRKETİ

Hürriyet Bulvarı, No:45, Türkseven Apt, K:1-D:7, Yakuplu, Beylikdüzü / İstanbul
Telefon: 0212 438 04 76 - E-mail: info@belcert.com

Belgenin geçerlilik durumu <https://www.belcert.com> adresinden kontrol edilebilir.



CERTIFICATE

**ÖZDEKAN KAUCUK İNŞAAT YAPI PROJE
MÜHENDİSLİK MÜŞAVİRLİK MÜMESSİLLİK
İTHALAT İHRACAT SANAYİ VE TİCARET
ANONİM ŞİRKETİ**

AHI EVRAN OSB MAH. BÜYÜK TİMUR CAD. NO:11
SİNCAN / ANKARA / TÜRKİYE

Denetlenmiş ve aşağıdaki standardın gerekliliklerine uygunluğu görülmüştür:

ISO 9001:2015

Kalite Yönetim Sistemi:

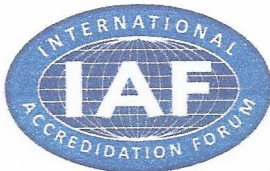
KAUCUK VE METAL ÜRÜN İMALATI (ELASTOMER NEOPRENE MESNET, KAYAR, TEFLONLU, POT, SARKAÇ, TAKVİYESİZ VE ÇANAK MESNET, KÖPRÜ GENLEŞME DERZLERİ, ELASTOMER BANT, SİSMİK İZOLATÖR (DEPREM TİTREŞİM SÖNÜMLEYİCİ), MERMİ SÖNÜMLEME TAKOZU VE ÇELİK MERMİ TUZAĞI, POLİGON PERDESİ VE POLİGON EKİPMANLARI, POLİGON ATICI BANKOSU KONVEYÖR BANT RULO, KAUCUK TAKOZ, OTOMOTİV VE İŞ MAKİNELERİ YEDEK PARÇALARI, HAYVAN YATAKLARI, HIZ KASİSLERİ)

Belge Numarası: QMS-0104767

İlk Belgelendirme Tarihi: 26.05.2022

Belgelendirme Periyodu: 3 Yıl

Belge Geçerlilik Tarihi: 25.05.2023



IQR Sertifikasyon Onayı

IQR ULUSLARARASI BELGELENDİRME HİZMETLERİ LTD.ŞTİ.

Beşevler Mah. Kocayunus Sk. No:3 Arslan Han Plaza K:2 Nilüfer / BURSA

Tel.: +90.224.266 00 16 Faks: +90.224.249 41 13 www.iqrcert.com e-posta: info@iqrcert.com



CERTIFICATE

**ÖZDEKAN KAUCUK İNŞAAT YAPI PROJE
MÜHENDİSLİK MÜŞAVİRLİK MÜMESSİLLİK
İTHALAT İHRACAT SANAYİ VE TİCARET
ANONİM ŞİRKETİ**

**AHI EVRAN OSB MAH. BÜYÜK TİMUR CAD. NO:11
SİNCAN / ANKARA / TÜRKİYE**

Has been assessed and found to Comply with the Requirements of:

ISO 9001:2015

The Quality Management System is applicable to:

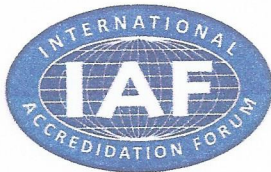
MANUFACTURING OF RUBBER AND METAL PRODUCT (ELASTOMER NEOPRENE BACKING, SLIDABLE, TEFLON, POT, PENDULUM, NON-REINFORCED AND BOWL SUPPORT, BRIDGE EXPANSION JOINTS, ELASTOMER TAPE, SEISMIC ISOLATOR (EARTHQUAKE VIBRATION DAMPENER), BULLET DAMPING WEDGE AND STEEL BULLET TRAP, POLYGON CURTAIN AND POLYGON EQUIPMENT, POLYGON SHOOTER BENCH CONVEYOR BELT ROLLER, RUBBER WEDGE, AUTOMOTIVE AND CONSTRUCTION MACHINERY SPARE PARTS, ANIMAL BEDS, SPEED BUMPS)

Certificate Number: QMS-0104767

Initial Certification Date: 26.05.2022

Certification Period: 3 Years

Certificate Validity Date: 25.05.2023



IQR Sertifikasyon Onayı

IQR ULUSLARARASI BELGELENDİRME HİZMETLERİ LTD.ŞTİ.

Beşevler Mah. Kocayunus Sk. No:3 Arslan Han Plaza K:2 Nilüfer / BURSA

Tel.: +90.224.266 00 16 Faks: +90.224.249 41 13 www.iqrcert.com e-posta: info@iqrcert.com



CERTIFICATE

**ÖZDEKAN KAUCUK İNŞAAT YAPI PROJE
MÜHENDİSLİK MÜŞAVİRLİK MÜMESSİLLİK
İTHALAT İHRACAT SANAYİ VE TİCARET
ANONİM ŞİRKETİ**

**AHI EVRAN OSB MAH. BÜYÜK TİMUR CAD. NO:11
SİNCAN / ANKARA / TÜRKİYE**

Has been assessed and found to Comply with the Requirements of:

ISO 14001:2015

The Environmental Management System is applicable to:

MANUFACTURING OF RUBBER AND METAL PRODUCT (ELASTOMER NEOPRENE BACKING, SLIDABLE, TEFLON, POT, PENDULUM, NON-REINFORCED AND BOWL SUPPORT, BRIDGE EXPANSION JOINTS, ELASTOMER TAPE, SEISMIC ISOLATOR (EARTHQUAKE VIBRATION DAMPENER), BULLET DAMPING WEDGE AND STEEL BULLET TRAP, POLYGON CURTAIN AND POLYGON EQUIPMENT, POLYGON SHOOTER BENCH CONVEYOR BELT ROLLER, RUBBER WEDGE, AUTOMOTIVE AND CONSTRUCTION MACHINERY SPARE PARTS, ANIMAL BEDS, SPEED BUMPS)

Certificate Number: EMS-0104767

Initial Certification Date: 26.05.2022

Certification Period: 3 Years

Certificate Validity Date: 25.05.2023



IQR Sertifikasyon Onayı

IQR ULUSLARARASI BELGELENDİRME HİZMETLERİ LTD.ŞTİ.

Beşevler Mah. Kocayunus Sk. No:3 Arslan Han Plaza K:2 Nilüfer / BURSA

Tel.: +90.224.266 00 16 Faks: +90.224.249 41 13 www.iqrcert.com e-posta: info@iqrcert.com



CERTIFICATE

**ÖZDEKAN KAUCUK İNŞAAT YAPI PROJE
MÜHENDİSLİK MÜŞAVİRLİK MÜMESSİLLİK
İTHALAT İHRACAT SANAYİ VE TİCARET
ANONİM ŞİRKETİ**

AHI EVRAN OSB MAH. BÜYÜK TİMUR CAD. NO:11
SİNCAN / ANKARA / TÜRKİYE

Denetlenmiş ve aşağıdaki standardın gerekliliklerine uygunluğu görülmüştür:

ISO 14001:2015

Çevre Yönetim Sistemi:

KAUCUK VE METAL ÜRÜN İMALATI (ELASTOMER NEOPRENE MESNET, KAYAR, TEFLONLU, POT, SARKAÇ, TAKVİYESİZ VE ÇANAK MESNET, KÖPRÜ GENLEŞME DERZLERİ, ELASTOMER BANT, SİSMİK İZOLATÖR (DEPREM TİTREŞİM SÖNÜMLEYİCİ), MERMİ SÖNÜMLEME TAKOZU VE ÇELİK MERMİ TUZAĞI, POLİGON PERDESİ VE POLİGON EKİPMANLARI, POLİGON ATICI BANKOSU KONVEYÖR BANT RULO, KAUCUK TAKOZ, OTOMOTİV VE İŞ MAKİNELERİ YEDEK PARÇALARI, HAYVAN YATAKLARI, HIZ KASİSLERİ)

Belge Numarası: EMS-0104767

İlk Belgelendirme Tarihi: 26.05.2022

Belgelendirme Periyodu: 3 Yıl

Belge Geçerlilik Tarihi: 25.05.2023



[Signature]

IQR Sertifikasyon Onayı

IQR ULUSLARARASI BELGELENDİRME HİZMETLERİ LTD.ŞTİ.

Beşevler Mah. Kocayunus Sk. No:3 Arslan Han Plaza K:2 Nilüfer / BURSA

Tel.: +90.224.266 00 16 Faks: +90.224.249 41 13 www.iqrcert.com e-posta: info@iqrcert.com



TECHNICKÝ A ZKUŠEBNÍ ÚSTAV STAVEBNÍ PRAHA, s.p.
Technical and Test Institute for Construction Prague, SOE

Akreditovaná zkušební laboratoř, Autorizovaná osoba, Notifikovaná osoba, Oznamovaný subjekt, Subjekt pro technické posuzování, Certifikační orgán, Inspekční orgán · Accredited Testing Laboratory, Authorized Body, Notified Body, Technical Assessment Body, Certification Body, Inspection Body · Prosecká 811/76a, 190 00 Praha 9 - Prosek, Czech Republic

Notified Body 1020

CERTIFICATE OF CONSTANCY OF PERFORMANCE

No. 1020 – CPR – 090-046356

In compliance with Regulation 305/2011/EU of the European Parliament and of the Council of 9 March 2011 (the Construction Products Regulation or CPR), this certificate applies to the construction product:

STRUCTURAL BEARING

variant: elastomeric bearing

Type of rubber: CR, NR

Type A – laminated bearing fully covered with elastomer comprising only one steel reinforcing plate;
Type B – bearing fully covered with elastomer comprising at least two reinforcing plates; Type C – laminated bearing with outer steel plates (profiled or allowing fixed); Type D – Type B with PTFE sheet bonded to the elastomer; Type E: Type C with one outer plate bonded to the elastomer and PTFE sheet recessed in the steel; Type F – plain pad bearings and strip bearings
with dimensions in plan less or equal to 1200x1200mm, for minimum operating temperature of -25°C

placed on the market under the name or trade mark of

Özdekan Kauçuk İnşaat Yapı Proje Mühendislik Müşavirlik Mümessillik İthalat İhracat Sanayi ve Ticaret A.Ş.

Identification No.: 6740437374

Address: Ostim Organize Sanayi Bölgesi 1202/1 Cd. No. 30-32
Yenimahalle, 06370 Ankara/ Turkey

and produced in the manufacturing plant:

Özdekan Kauçuk İnşaat Yapı Proje Mühendislik Müşavirlik Mümessillik İthalat İhracat Sanayi ve Ticaret A.Ş.

Identification No.: 6740437374

Address: Ostim Organize Sanayi Bölgesi 1202/1 Cd. No. 30-32
Yenimahalle, 06370 Ankara/ Turkey

This certificate attests that all provisions concerning the assessment and verification of constancy of performance described in Annex ZA of the standard

EN 1337-3:2005

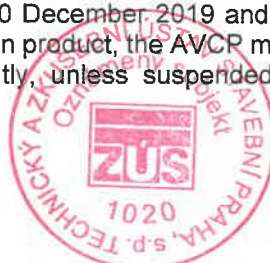
under system 1 for the performance set out in this certificate are applied and that the factory production control conducted by the manufacturer is assessed to ensure the

constancy of performance of the construction product.

This certificate was first issued on 10 December 2019 and will remain valid as long as neither the harmonised standard, the construction product, the AVCP methods nor the manufacturing conditions in the plant are modified significantly, unless suspended or withdrawn by the notified product certification body.

The stamp of the Notified Body 1020

Prague, 10 December 2019



Martin Pešek

Deputy Manager of the Notified Body